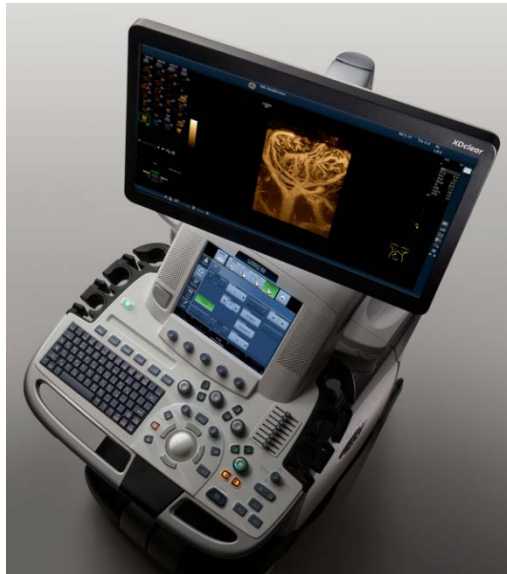


Doppler Ultrasound

Information for Patients



Department of Clinical Neurosciences



DCN Imaging Dept

Ground Floor, Dept of Clinical Neurosciences
50 Little France Crescent, Edinburgh BioQuarter,
Edinburgh, EH16 4TJ
Telephone: 0131 312 0800

What is Doppler Ultrasound and how does it work?

A Doppler ultrasound test uses reflected sound waves to evaluate blood as it flows through a vessel. During the test, a handheld instrument (transducer) is passed lightly over the skin above a blood vessel. The transducer sends and receives sound waves that are amplified through a microphone. The sound waves bounce off solid objects, including blood cells. The movement of blood cells causes a change in pitch of the reflected sound waves (called the Doppler Effect). If there is no blood flow, the pitch does not change. Information from the reflected sound waves can be processed by a computer to provide graphs or pictures that represent the flow of blood through the blood vessels.

What preparation will be required?

There are no special preparations for this scan but it would be helpful if you could wear an open necked top.

What if I am taking medication?

Do not stop taking any prescribed medication as it will not affect your scan. Nor will the scan affect the usefulness of your medication. If you have any questions about this please contact the department on the phone number overleaf.

What will the ultrasound scan involve?

You will be asked to remove any jewellery from your neck and loosen the clothing around your neck. You will be asked to lie on a scanning couch. The sonographer will put some ultrasound gel on your neck and a special ultrasound 'microphone' will be used to listen to the blood flow.

How long will the scan take?

The scan time can vary but should take approximately 20 – 30 minutes.

What happens after the scan?

Once your scan is complete and the images have been checked you will be able to go home.

How will I get my results?

You will be given your results by the sonographer. These results will also be available to the doctor who referred you for this scan. The referring doctor may then send you a follow-up appointment/letter to discuss the results with them.

Keeping your Appointment

If you cannot keep your appointment, or have been given one that is unsuitable, please change it by phoning the number on your appointment letter. Your call will give someone else the chance to be seen and will help us keep waiting times to a minimum.

Public Transport and Travel Information

Bus details available from:

Lothian Buses on **0131 555 6363** or

www.lothianbuses.co.uk

Traveline Scotland on **08712002233** or

www.travelinescotland.com

Train details available from:

National Rail Enquiries on **03457 484 950** or

www.nationalrail.co.uk

Patient Transport

Patient Transport will only be made available if you have a medical/clinical need. Telephone **0300 123 1236** *calls charged at local rate up to 28 days in advance to book, making sure you have your CHI Number available. Hearing or speech impaired? Use text relay: **18001-0300 123 1236*** (calls charged at local rate). To cancel patient transport, telephone: 0800 389 1333 (Freephone 24 hour answer service).

What should I do now?	✓
<p>Check your appointment time and date are suitable (please take care to check if your appointment is in the morning or in the evening – some scanning lists start early and finish late in the evening)</p>	
<p>There are several Ultrasound Departments on the Edinburgh BioQuarter site. Please check your appointment letter to ensure you attend the correct department. The Ultrasound Department in the DCN Imaging Department is located on the ground floor within the Department of Clinical Neurosciences (DCN).</p> <p>The closest Car Park is Car Park 1B</p>	

If you have internet access you may find the following websites helpful for their description of common radiology examinations:

www.radiologyinfo.org

www.asnr.org/patientinfo