

Management of dislodged gastrostomy tubes

Information for patients and carers

What to do if your feeding tube has become dislodged

- You will need to have a new tube inserted as soon as possible
- Your stoma will start to heal and may completely close soon after the tube has come out
- **You may have** to be admitted to hospital to have a tube reinserted. **Seek help as soon as possible.**

Important: You cannot replace a gastrostomy tube yourself. You need to contact your nurse or hospital immediately.

Contact number

If this is the first gastrostomy tube and has been inserted less than 28 days ago:

NHS 24 **111**

Cancer assessment unit at the WGH **0131 537 4050**
(for oncology patients only)

If your tube has been in for more than 28 days or it is a replacement tube:

Community Enteral Nutrition Team (CENT) **0131 536 7848**
Monday – Friday 9:00am-4:00pm

NHS 24 **111**

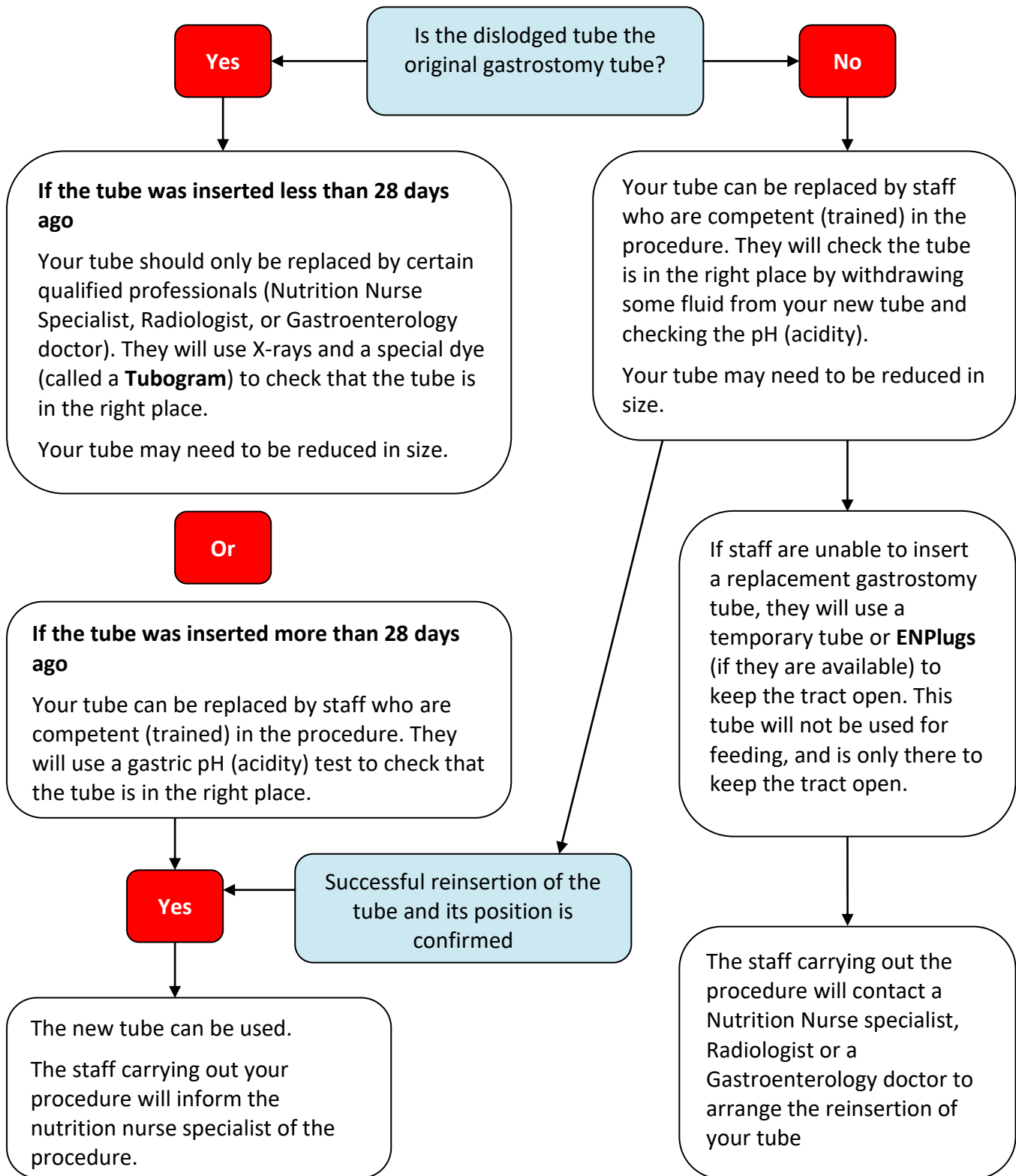
Other e.g. District Nurses
.....

Remember

- Try to remain calm
- Place a clean gauze dressing or large plaster over the stoma (hole) to prevent stomach contents leaking onto your skin or clothes. If you have ENPlugs and have been trained to use them, insert the correct size into your stoma site.
- Contact the person who normally replaces your tube if this occurs during the daytime e.g Your District Nurses or Homeward Nurses (Careline Number 03457 623 626)
- If you have to contact the hospital, emphasise that the new tube will need to be replaced as soon as possible so your stoma does not heal over, and remember to bring your **spare tube** with you.

What will happen when your tube is replaced?

This procedure will be used by the staff who will be replacing your tube:



You will have to remain in hospital whilst your tube is replaced, and you must **not use** your tube until the tube position is confirmed.