

# Meet the team

Lin Yap – Team Leader  
Claire G  
Stephanie H  
Rebecca S

Hannah A  
Alison S  
Vikki C

## How to contact us

0131 242 2587 (answer phone)  
0131 242 1306  
0131 242 1323



<https://nhslthiansurveys.onlinesurveys.ac.uk/neonatal-community-outreach-team-patient-experience>

We are always open to suggestions on how to improve the outreach service, please fill in our feedback form to let us know how we are doing.

© Written by VC, RS, LY, MF and Dr. Rudnicka, illustrations by Dr Frej- January 2022



### Neonatal Community Outreach Team

Neonatal Unit  
Simpson Centre for Reproductive Health  
51 Little France Road  
EDINBURGH  
EH16 4SA

Monday – Sunday  
8.00am – 7.00pm



V1.0 approved by NHS Lothian Patient Information Team: Jun 2022  
Review date: Jun 2025



# Who are we?

The Neonatal Community Outreach Team consists of 7 neonatal nurses who are trained in Sick Children's Nursing and Neonatal Nursing. We provide follow on care at home for babies born prematurely and those who need on-going support.

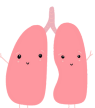
# What do we do?

Our aim is to help you with the transition from hospital to home as early as possible, with our main goal being keeping babies and families together.

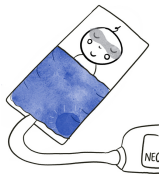
We provide nursing care, professional advice, support and training to parents and carers to enable you to be confident in caring for your baby. Babies we support at home include:



- Babies who need continual support with feeding to ensure adequate growth and development. We support nasogastric tube feeding



- Babies with chronic lung disease. We support families at home who require oxygen support and weaning of home oxygen



- Babies with neonatal jaundice. We can start and monitor home phototherapy.



- Babies who need further blood tests



- We do all we can to ensure safe early discharge from hospital so that your baby can stay at home with you and have as few hospital visits as possible

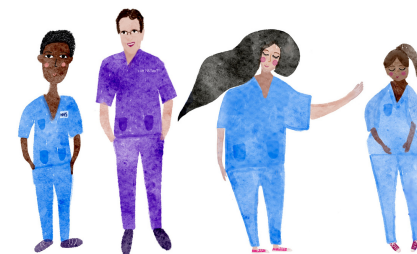


# How home visits work?

We will visit you at home and arrange a time that is convenient in advance. The frequency of visits depends on your baby's needs. We will bring all the equipment needed to assess or treat your baby and communicate with the necessary professionals to discuss your baby's ongoing needs.

# Who do we work with?

The team work very closely with other health professionals within NHS Lothian including: Consultant Neonatologists, Physiotherapists, Speech and Language Therapists, Dietitians, Health Visitors, Midwives, Community Children's Nursing Team and Social Services to name a few.



The Neonatal Community Outreach Team **is NOT an emergency service**. If your baby requires urgent medical attention, please seek advice from your GP or take your baby to the nearest Children's Accident and Emergency Department. You might need to **dial 999 in an emergency**.