



CWIC Service
Care When It Counts
providing a same day primary
care appointment service

CWIC Service

Same day appointment service

The CWIC team provides same day assessments, diagnosis and treatment for a range of non-recurring acute illnesses.

Patients receive an initial assessment over the phone, and if required the CWIC team will offer an in person appointment at Musselburgh Primary Care Centre.



Why use CWIC?

The CWIC team are qualified to assess health needs and determine plans for care through autonomous decision making, care planning, care management and instigating any appropriate investigations or referrals to secondary care.

Meaning you can either be provided with a prescription, support or advice, or indeed be referred to more specialist teams depending on the nature of your condition.

Benefits of using CWIC

- ✓ Same day appointment service.
- ✓ Access to a range of multi-disciplinary team of clinicians.
- ✓ Onward referrals to specialist teams if required.

Multi-disciplinary team



Administration Team

The Administration Team are on hand to assist you on arrival and can respond to any additional queries.



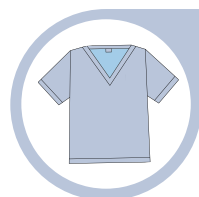
Nurse Practitioner (NP)

Nurse Practitioners can assist patients to manage a range of acute illnesses. Following an assessment of the patients' needs, they can prescribe if necessary.



Advance Nurse Practitioners (ANP)

Advanced Nurse Practitioners have completed advanced training to support patients with a wider range of presenting concerns. They can prescribe if necessary.



Physician Associates (PA)

Physician Associates are trained in taking medical histories, examinations, diagnosis, and management planning. They do this alongside GPs who also support the prescribing part of any patient management plan.



General Practitioners (GP)

GPs assess patients in the same way as the other members of the CWIC team, but have a mixture of clinical backgrounds and can also provide support in certain areas such as dermatological conditions, woman's health, prescribing for PAs and training staff.

Contacting CWIC

Requesting a CWIC appointment

Access to the CWIC service is currently by referral via the GP surgeries that are currently linked to this service:

- Inveresk Medical Practice, Musselburgh
- Riverside Medical Practice, Musselburgh
- The Harbours Medical Practice, Cockenzie
- Tranent Medical Practice, Tranent.

Contact your local Medical Practice, and inform the patient advisory team of the nature of your enquiry. They will confirm if your concern can be handled by the CWIC team.

PLEASE NOTE, CWIC are unable to support:



- Patients under 12 years old
- Repeat prescription requests
- Contraceptive issues
- Pregnancy, postpartum or post-natal concerns
- Substance misuse issues
- Housebound patients
- Long term conditions and/or conditions already being treated by a GP.



The CWIC Team is based at:

Musselburgh Primary Care Centre

Inveresk Road, Musselburgh, EH21 7BP

eastlothian.gov.uk/health-services